

# RACING MEDICATION AND TESTING CONSORTIUM

Scot Waterman, DVM

Executive Director



# Withdrawal Time Projects

- Effort towards uniformity:
  - Working with a list of 47 medications
  - Focus will be on concentration levels in blood that support withdrawal times...which may or may not be possible
  - Very little existing data in scientific literature that is helpful in determining withdrawal times in blood

# Withdrawal Time Projects

- Effort towards uniformity:
  - Drugs prioritized by the number of positives called across country and by surveys of practitioners
  - Pilot studies complete on lidocaine, mepivacaine, glycopyrrolate, pyrilamine, acepromazine, detomidine, methocarbamol, butorphanol

# Withdrawal Time Projects

- **Effort towards uniformity:**
  - Analysis of each drug done by 2 labs (Penn, Iowa St, Florida, UC-Davis)
  - Pilot study data will direct a 20 horse administration study
  - 20 horse studies will be done at academic institutions and also hopefully with research stable being established by RMTC/KEDC in Kentucky

# Withdrawal Time Projects

- Not uniform but helpful:
  - RMTC website will have a database of existing withdrawal times state-by-state
  - Users will have to register and agree to hold harmless language
  - Database will be searchable by drug and by jurisdiction
  - Approximately 50% complete

Edit View Favorites Tools Help

Back Search Favorites

http://www.rmtcnet.com/content\_august.asp?whatpage=WITHDRAWALAGREE

Go

Search Reference Highlight Popups allowed Weather Smileys

Search Web

Bookmarks Mail Yahoo! Games My Yahoo!



Working to develop, promote and coordinate, at the national level, policies, research, and educational programs which seek to ensure the fairness and integrity of racing and the health and welfare of racehorses and participants, and protect the interests of the betting public.

- [Home](#)
- [About Us](#)
- [Research Program](#)
- [Model Rules](#)
- [Withdrawal Times](#)
- [Questions](#)
- [News](#)
- [Links](#)
- [Contact Us](#)

Welcome to the RMTC Withdrawal Times database. Here you will find suggested withdrawal times for therapeutic medications used in racehorses. Please check back as we are continually adding information as it becomes available.

To access the information, please enter your name and indicate the type of license you have, as well as the primary state in which you are licensed.

First Name:	<input type="text" value="Scot"/>
Last Name:	<input type="text" value="Waterman"/>
License Type:	<input type="text" value="Please Select"/>
Licensed In:	<input type="text" value="Please Select"/>
<input type="button" value="I Agree"/> <input type="button" value="Cancel"/>	



Working to develop, promote and coordinate, at the national level, policies, research, and educational programs which seek to ensure the fairness and integrity of racing and the health and welfare of racehorses and participants, and protect the interests of the betting public.

- Home
- About Us
- Research Program
- Model Rules
- Withdrawal Times
- Questions
- News
- Links
- Contact Us

Welcome to the RMTC Withdrawal Times database. Here you will find suggested withdrawal times for therapeutic medications used in racehorses. Please check back as we are continually adding information as it becomes available.

To access the information, please enter your name and indicate the type of license you have, as well as the primary state in which you are licensed.

First Name:

Last Name:

License Type:

Licensed In:



Working to develop, promote and coordinate, at the national level, policies, research, and educational programs which seek to ensure the fairness and integrity of racing and the health and welfare of racehorses and participants, and protect the interests of the betting public.

Welcome to the RMTC Withdrawal Times database. Here you will find suggested withdrawal times for therapeutic medications used in racehorses. Please check back as we are continually adding information as it becomes available.

To access the information, please enter your name and indicate the type of license you have, as well as the primary state in which you are licensed.

First Name:

Last Name:

License Type:

Licensed In:

- Groom
- Jockey
- Owner
- Racing Official
- Trainer
- Vet





Working to develop, promote and coordinate, at the national level, policies, research, and educational programs which seek to ensure the fairness and integrity of racing and the health and welfare of racehorses and participants, and protect the interests of the betting public.

- Home
- About Us
- Research Program
- Model Rules
- Withdrawal Times
- Questions
- News
- Links
- Contact Us

Welcome to the RMTC Withdrawal Times database. Here you will find suggested withdrawal times for therapeutic medications used in racehorses. Please check back as we are continually adding information as it becomes available.

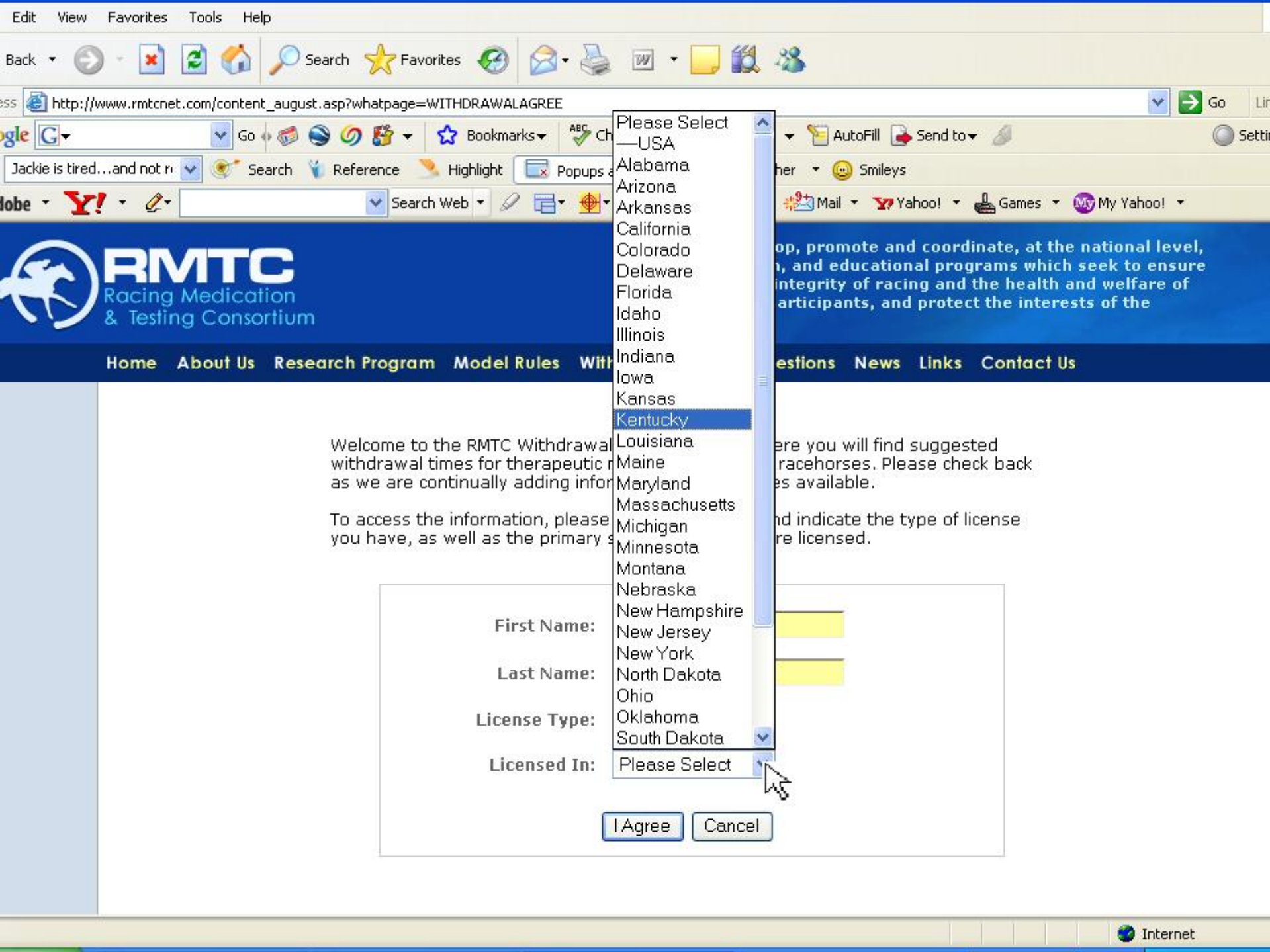
To access the information, please enter your name and indicate the type of license you have, as well as the primary state in which you are licensed.

First Name:

Last Name:

License Type:

Licensed In:



Welcome to the RMTTC Withdrawal agreement. This agreement outlines the withdrawal times for therapeutic drugs as we are continually adding information. To access the information, please provide your name, address, and phone number, as well as the primary state you are licensed in.

- Please Select
- USA
- Alabama
- Arizona
- Arkansas
- California
- Colorado
- Delaware
- Florida
- Idaho
- Illinois
- Indiana
- Iowa
- Kansas
- Kentucky
- Louisiana
- Maine
- Maryland
- Massachusetts
- Michigan
- Minnesota
- Montana
- Nebraska
- New Hampshire
- New Jersey
- New York
- North Dakota
- Ohio
- Oklahoma
- South Dakota
- Please Select

First Name:  
Last Name:  
License Type:  
Licensed In:

I Agree Cancel



Working to develop, promote and coordinate, at the national level, policies, research, and educational programs which seek to ensure the fairness and integrity of racing and the health and welfare of racehorses and participants, and protect the interests of the betting public.

Welcome to the RMTC Withdrawal Times database. Here you will find suggested withdrawal times for therapeutic medications used in racehorses. Please check back as we are continually adding information as it becomes available.

To access the information, please enter your name and indicate the type of license you have, as well as the primary state in which you are licensed.

First Name:

Last Name:

License Type:

Licensed In:

Back Forward Stop Home Search Favorites Refresh Mail Print W Yellow Magnifying Glass People

Address [http://www.rmtcnet.com/content\\_august.asp?whatpage=WITHDRAWALLEGAL](http://www.rmtcnet.com/content_august.asp?whatpage=WITHDRAWALLEGAL) Go

Google G Go Bookmarks Check Look for Map AutoFill Send to

or Search Reference Highlight Popups allowed Weather Smileys

Adobe Y! Search Web Bookmarks Mail Yahoo! Games My Yahoo!



Working to develop, promote and coordinate, at the national level, policies, research, and educational programs which seek to ensure the fairness and integrity of racing and the health and welfare of racehorses and participants, and protect the interests of the betting public.

[Home](#) [About Us](#) [Research Program](#) [Model Rules](#) [Withdrawal Times](#) [Questions](#) [News](#) [Links](#) [Contact Us](#)

**WARNING:**

The information on therapeutic medication withdrawal times does not constitute and is not a guarantee, warranty, or assurance that the use of any of the therapeutic medications in the amount listed will not result in a positive post-race test. The Racing Medication and Testing Consortium is not responsible for results differing in any way from the ones stated herein.

Use of this booklet and its information does not lessen or relieve any trainer's responsibility for affirming that, during a horse race, a horse is free of any therapeutic medication listed in their State's Racing Commission rule book and for complying with provisions of the State Racing Commission's regulations.

Owners, trainers or any other person in charge of or being in care of a race horse are strongly advised to consult a veterinarian and the State Racing Commission regulatory veterinarian for guidance and advice for the use and withdrawal times of all therapeutic medications as testing methodologies may change with little or no notice.

The guidelines in this booklet are not consistent with foreign regulations or laboratory methods.

I Agree

Cancel

start | Inbox - Microsoft Out... | Racing Medication an... | Microsoft PowerPoint ... | Type to search | Internet | 25°



Working to develop, promote and coordinate, at the national level, policies, research, and educational programs which seek to ensure the fairness and integrity of racing and the health and welfare of racehorses and participants, and protect the interests of the betting public.

## Withdrawal Times

The Racing Medication and Testing Consortium has compiled guidelines about current withdrawal times for 50 therapeutic medications identified by the American Association of Equine Practitioners. Guidelines are the result of a survey of state and provincial racing commissions and from each state's veterinary expertise.

Guidelines represent information collected as of XXXXXXXX and will be updated as information is made available.

You may search the guidelines by jurisdiction and by medication.

Jurisdiction:

Medication:

Back [Navigation Icons] Search Favorites [Navigation Icons]

Address Bar: [http://www.rmtcnet.com/content\\_august.asp?whatpage=WITHDRAWAL](http://www.rmtcnet.com/content_august.asp?whatpage=WITHDRAWAL) Go

Search Reference Highlight [Navigation Icons]

Search Web [Navigation Icons]

Map AutoFill Send to [Navigation Icons]

Weather Smileys [Navigation Icons]

Mail Yahoo! Games My Yahoo! [Navigation Icons]



[Home](#) [About Us](#) [Research Program](#) [Model Rules](#)

[Questions](#) [News](#) [Links](#) [Contact Us](#)

## Withdrawal Times

The Racing Medication and Testing Consortium has compiled withdrawal times for 50 therapeutic medications identified by the American Association of Equine Practitioners, state racing commissions and from each state's veterinary expertise.

Withdrawal times for 50 therapeutic medications are the result of a survey of state and provincial racing commissions.

Guidelines represent information collected as of XXXXX.

Information is updated as information is made available.

You may search the guidelines by jurisdiction and by medication.

- Please Select
- USA
- Alabama
- Arizona
- Arkansas
- California
- Colorado
- Delaware
- Florida
- Idaho
- Illinois
- Indiana
- Iowa
- Kansas
- Kentucky**
- Louisiana
- Maine
- Maryland
- Massachusetts
- Michigan
- Minnesota
- Montana
- Nebraska
- New Hampshire
- New Jersey
- New York
- North Dakota
- Ohio
- Oklahoma
- South Dakota

Jurisdiction:

Please Select

Medication:

Please Select

Submit Request



Working to develop, promote and coordinate, at the national level, policies, research, and educational programs which seek to ensure the fairness and integrity of racing and the health and welfare of racehorses and participants, and protect the interests of the betting public.

## Withdrawal Times

The Racing Medication and Testing Consortium has compiled guidelines about current withdrawal times for 50 therapeutic medications identified by the American Association of Equine Practitioners. Guidelines are the result of a survey of state and provincial racing commissions and from each state's veterinary expertise.

Guidelines represent information collected as of XXXXXXXX and will be updated as information is made available.

You may search the guidelines by jurisdiction and by medication.

Jurisdiction:

Medication:



ate and coordinate, at the national level, educational programs which seek to ensure of racing and the health and welfare of s, and protect the interests of the

# With

The Racing Medication and Testing Consortium has com identified by the American Association of Equine Practit commissions and from each state's veterinary expertis

Guidelines represent information collected as of XXXXX

You may search the guidelines by jurisdiction and by m

chdrawal times for 50 therapeutic medications of a survey of state and provincial racing

ation is made available.

Jurisdiction:

Medication:

- Please Select
- Acepromazine
- Acetylsalicylic acid
- Albuterol
- Aminocaproic Acid
- Atropine
- Beclomethasone
- Betamethasone
- Boldenone 50 mg/ml Injectable
- Butorphanol
- Cimetidine
- Clenbuterol
- Cromolyn 20 mg/ 2 ml Aerosol
- Dantrolene 10 mg/ml Injectable
- Detomidine
- Dexamethasone
- Diazepam
- Dipyrrone
- DMSO
- Flunixin
- Fluoroprednisolone
- Fluphenazine
- Glycopyrrolate
- Guaifenesin
- Hydroxyzine
- Ibuprofen
- Isoflupredone
- Isoxsuprine
- Ketoprofen
- Lidocaine
- Please Select

Submit Request





Working to develop, promote and coordinate, at the national level, policies, research, and educational programs which seek to ensure the fairness and integrity of racing and the health and welfare of racehorses and participants, and protect the interests of the betting public.

# Withdrawal Times

The Racing Medication and Testing Consortium has compiled guidelines about current withdrawal times for 50 therapeutic medications identified by the American Association of Equine Practitioners. Guidelines are the result of a survey of state and provincial racing commissions and from each state's veterinary expertise.

Guidelines represent information collected as of XXXXXXXX and will be updated as information is made available.

You may search the guidelines by jurisdiction and by medication.

Jurisdiction: Kentucky

Medication: Acepromazine

Submit Request



Working to develop, promote and coordinate, at the national level, policies, research, and educational programs which seek to ensure the fairness and integrity of racing and the health and welfare of racehorses and participants, and protect the interests of the betting public.

# Withdrawal Times

## Acepromazine



DOSE and ROUTE	WITHDRAWAL TIME	JURISDICTION
No specified dose or route	5 days	Kentucky

2006 Racing Medication and Testing Consortium, Inc. all rights reserved  
821 Corporate Drive, Lexington, Kentucky 40503  
(859)224-2844 fax (859) 224-2710 [Swaterman@rmtcnet.com](mailto:Swaterman@rmtcnet.com)

# Withdrawal Time Projects

## ■ Timelines:

- Website database will go live on January 1, 2007 ([www.rmtcnet.com](http://www.rmtcnet.com))
  - Additional info will be added as available
- Large scale administration studies will begin early 2007
  - As scientific consensus is reached on an individual drug the information will be added to the model rules