

NORTH AMERICAN RACING ACADEMY



2006

Mission

- Produce professional, skilled and knowledgeable jockeys, horsemen and racing industry support personnel
- Develop well rounded graduates by providing opportunities to learn while doing (OJT, so to speak)
- Improve the welfare and caretaking of horses while improving the profile of the racing industry by educating respectful participants that have ability to communicate effectively and lead exemplary lives and careers

Goals

- Produce the future stars of horse racing
- Recruit individuals who may have not otherwise thought to pursue a career in the racing industry
- Become a source of qualified labor for the racing industry
- Become the standard by which all other racing schools are judged

7:00 AM – 4:00 PM
M-F



Racehorse Care and Management



Students

- 11 students currently enrolled; 7 young men and 4 young ladies
- Ages 18 to 28
- Only 4 have any previous experience working with horses
- Each one is responsible for the daily care of one horse

Racehorse Riding Skills & Race Riding Techniques



Basic Riding Skills I & II



Equicizers
Mustangs
Thoroughbreds
Quarter Horses



Arenas
Turf Course
Cross Country
Training Center

A Typical 'A'typical Day

- 7:00 – 11:00 - Grooming, riding and learning about horses
- 11:30 – 12:30 – Equine Studies lecture classes
- 12:30 – 2:00 – Lunch and break
- 2:00 – 3:00 – Skill practice
- 3:00 – 4:00 – Evening chores

NARA Staff

- **Chris McCarron**
 - Executive Director, Instructor
- **C. Reid McLellan, PhD**
 - Instructional Specialist
- **Jennifer Voss-Franco**
 - Program Coordinator



The Future

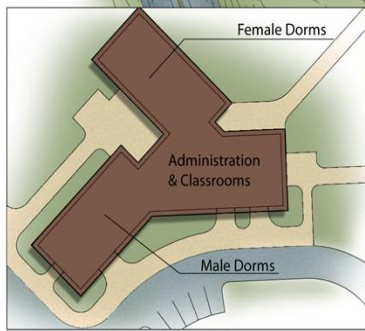
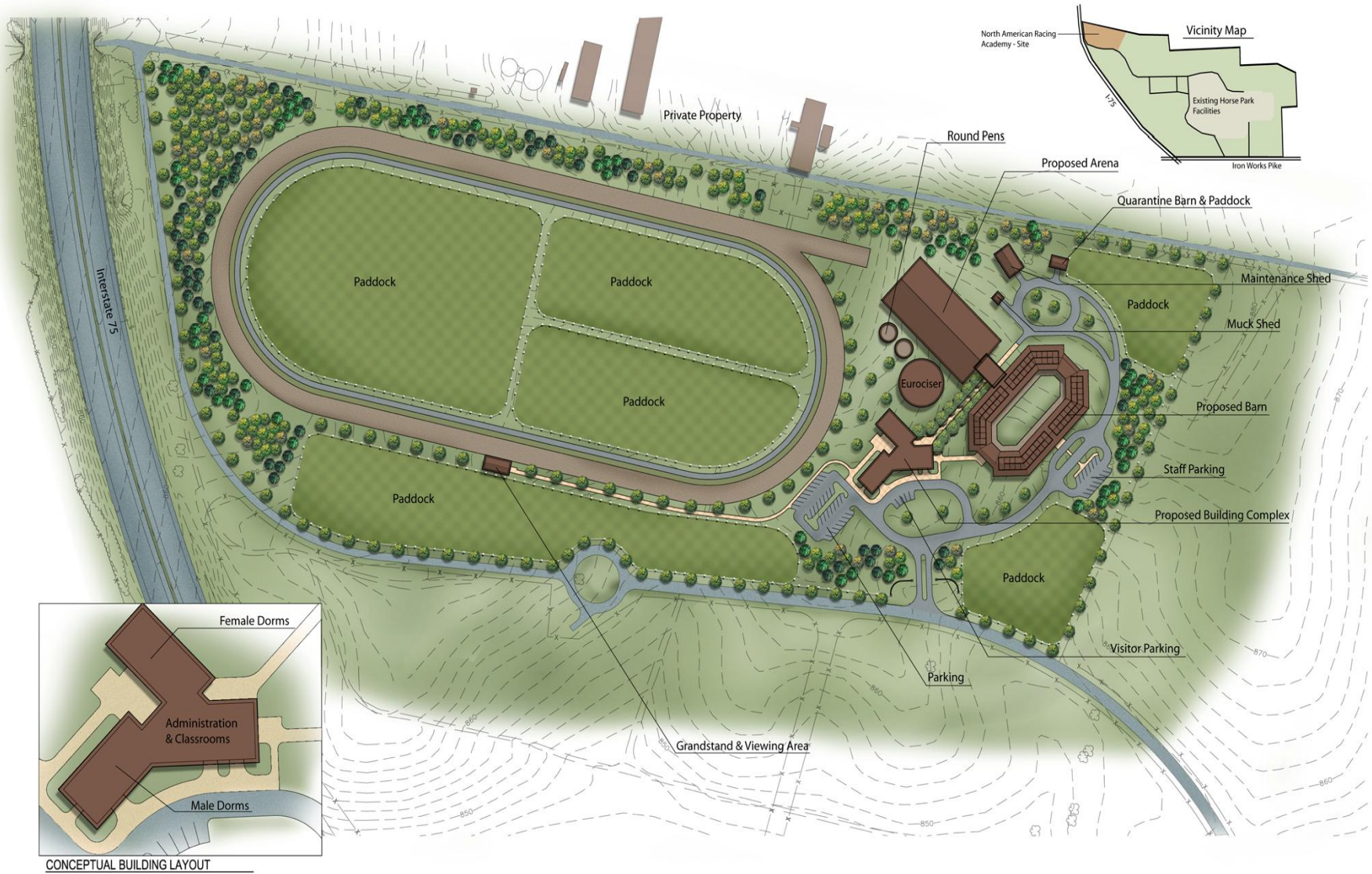
ASSOCIATES DEGREE OF APPLIED SCIENCE IN EQUINE STUDIES

Professional Jockey Pathway

Professional Horsemen's Pathway

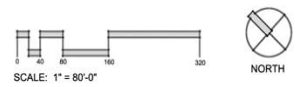
Racing Industry Support Personnel Pathway

Build a full-service campus



PROPOSED MASTER PLAN
NORTH AMERICAN RACING ACADEMY

KENTUCKY COMMUNITY & TECHNICAL COLLEGE SYSTEM
 KENTUCKY HORSE PARK - LEXINGTON, KENTUCKY



APRIL 21, 2006

JAMES B. EVANS & ASSOCIATES, PSC
 landscape architects
 site planners
 628 NORTH BROADWAY
 PH 609-255-5987
 jbe@jbea.net
 LEXINGTON, KENTUCKY 40508
 FAX 609-255-5988

Come walk
(or ride)
this trail
with us

