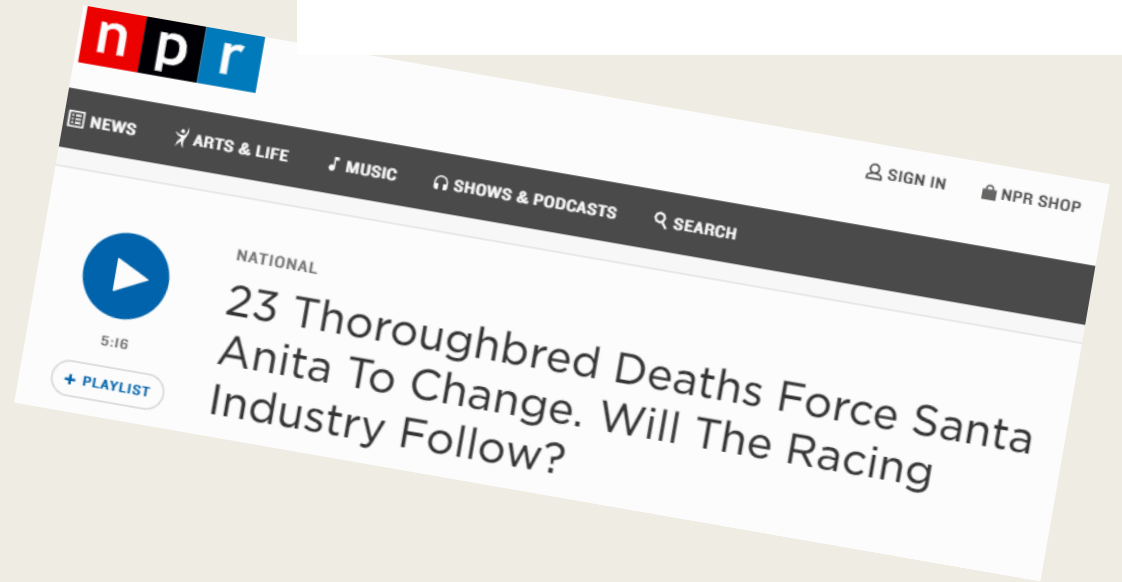


— THE —
STRONACH
GROUP

**HORSES FIRST:
PUTTING EQUINE
WELFARE AT THE
FOREFRONT**

Dr. Dionne Benson
Chief Veterinary
Officer
The Stronach Group



OPINION

ENTER THE FRAY

OPINION

After 30 dead horses, thank heavens Santa Anita's lethal season is finally over

What happened?

- Awaiting investigation from the CHRB and the Los Angeles DA's Office
- Historically 80+% of horses have pre-existing conditions
 - *Vet inspections confounded by medication?*
- Significant weather pattern?

In the end, we had to act without having many answers.

— THE —
STRONACH
GROUP



What was done?

Racing

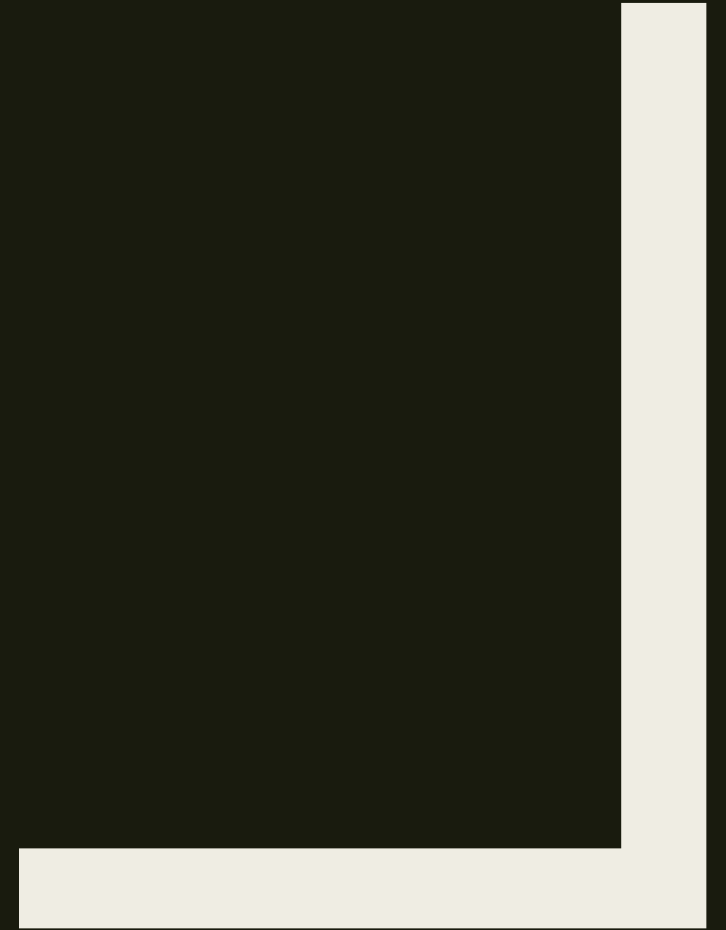
- Medication
- Crop Usage (in process)
- Private Veterinarian Participation
- Governor's Review Panel

Training

- Medication
- Crop usage
- Private Veterinarian Participation
- Registration for Works
- Horse Inspection
- Random Drug Testing
- Increased Veterinary Presence

— THE —
STRONACH
GROUP

RACING





Medications in Racing

- Intra-articular medications – 14 day stand down and no stacking (limit of 1 medication per class)
- New 30 day stand down on fetlock corticosteroid injections mandated by CHRB
- NSAIDs – 48 hour stand down and no stacking

Horse racing debate on riding crop continues – abusive whip or safety tool?

The Jockeys' Guild has teamed with the Thoroughbred Owners of California to oppose the proposed whip rule fueled by The Stronach Group

Crop Usage

- Pending regulation
- For safety but not for improvement of placing vs. limitation on number of strikes

— THE —
STRONACH
GROUP

Private Veterinarian Participation

- Private veterinarians are required to affirm that within 3 days of entry, they have observed the horse at a trot and believe it to be free of any issues that would prevent the horse from entering to race

—THE—
STRONACH
GROUP

Governor's Review Panel

- Instituted by the California Governor's Office
- 5 Member Panel that reviews entries
 - *Some are scratched outright*
 - Recent form (e.g., race or work history)
 - Medication administration history (corticosteroids)
 - *Some receive veterinary exams 3-4 days out*
- Results in 1-5 scratches per card on most days



TRAINING





Medications in Training

- Intra-articular medications – as per ARCI current rules
- NSAIDs – 48 hour stand down
- Opioid analgesics – as in racing
- Local Anesthetics – as in racing

Crop Usage

One of the things that became abundantly clear was that the public does not condone the use of the crop to encourage the horse.

We have limited the use of the crop in training to those uses consistent with safety of the horse and rider only.

Private Veterinarian Participation

- Private veterinarians are required to affirm that within 5 days of a work, they have examined the horse and, at a minimum, observed the horse at a trot and believe it to be free of any issues that would prevent the horse from working



Registration for works

- Trainers must register all horses that are intended to work 48 hours prior.
- Triggers review protocol
 - *Allows association and regulatory veterinarians an opportunity for intervention*

Veterinary Inspection

Every training day, a selection of horses (15-30) that are set to work the following day are given a pre-race inspection.

— THE —
STRONACH
GROUP

Random Drug Testing in Training

- A selection of horses that work at Santa Anita are drug tested by the CHRB
- While we cannot officially know about any specific violations, compliance has reported to be excellent



— THE —
STRONACH
GROUP

Increased Veterinary Presence

- There is at least one (and usually two) track veterinarian(s) present on the track during morning training hours.
- The veterinarian watches horses enter the track, work/gallop/trot, and leave the track
- Horses that are unsound are prevented from working and are inspected along with any horses that are unsound at any time they are on the track regardless of what they are there to do (work/gallop/trot)

— THE —
STRONACH
GROUP





HAS IT WORKED?



December through March

Type of Trip	# of Musculoskeletal Fatalities	# of Trips	Per 1,000
Race	12	2,956	4.06
Works	11	11,008	0.91
Total	23	13,964	1.64

April through End of Winter Meet

Type of Trip	# of Musculoskeletal Fatalities	# of Trips	Per 1,000
Race	3	2,448	1.23
Works	3*	9,390	0.32
Total	6	11,838	0.51

*Includes MS Fatalities that occurred while galloping. If an estimate of all trips on the track in training are included, the MS fatality rate is approximately 0.019/1000 training sessions.

This represented a nearly 70% reduction in MS Catastrophic breakdowns during racing and an 65% reduction in breakdowns during training (works only)

December through March

Type of Trip	# of Musculoskeletal Fatalities	# of Trips	Per 1,000
Race	12	2,956	4.06
Works	11	11,008	0.91
Total	23	13,964	1.64

Fall Meet

Type of Trip	# of Musculoskeletal Fatalities*†	# of Trips	Per 1,000
Race	4	1,490	2.68
Works	2	9,311	0.21
Total	6	10,801	0.55

*These numbers do not include 1 sudden death that occurred during this time period.

† If we consider an estimate of all gallops and breezes, the fatality rate in training is reduced to 0.019/1000 training sessions

This represented a 34% reduction in MS Catastrophic breakdowns during racing and a greater than 75% reduction in breakdowns during training (works only)



WHAT ELSE?



Lasix

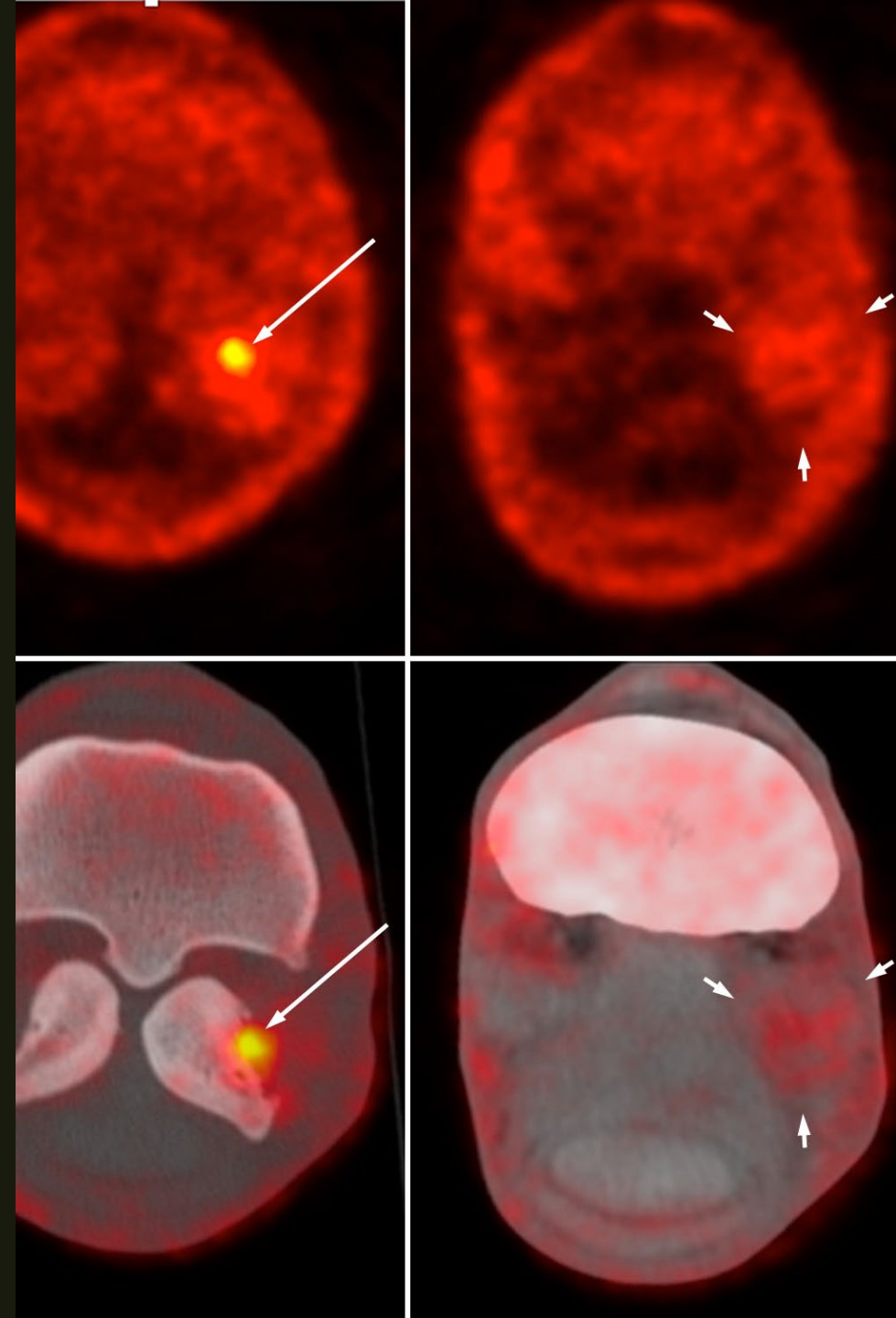
- Maximum dose has been reduced from 500 mg to 250 mg.
- 2 year old horses of 2020 will not race on Lasix (phase out over their careers)
- Stakes races 2021 and beyond will not allow Lasix use
 - *Allow for a change in the breeding of horses*



Technology (PET)

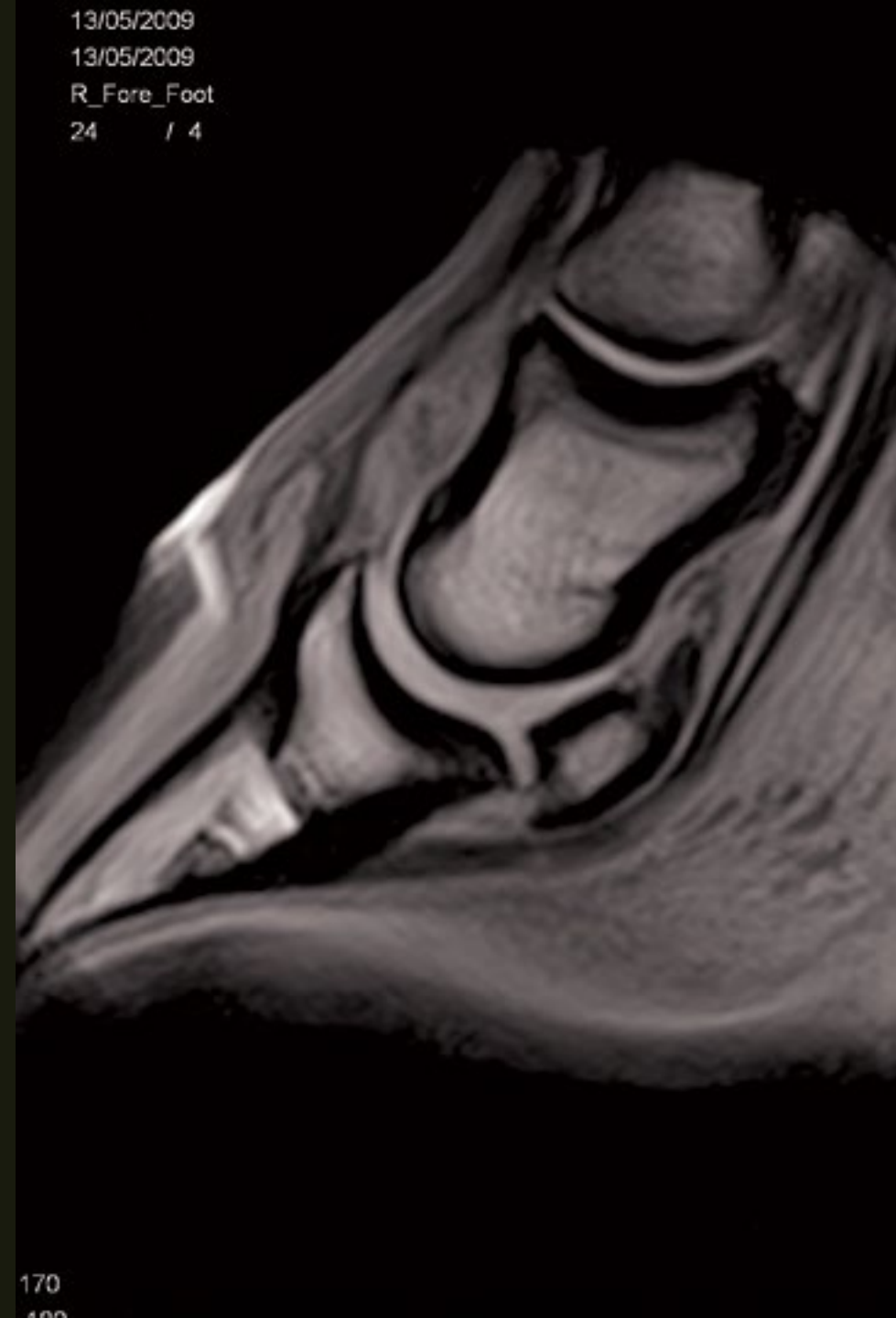
- Positron Emission Tomography Scanner for use in standing horses
- Developed by UC Davis
- Novel technology for identification of potential issues in sesamoid bones that have, to date, not been successfully diagnosed
- Should be in place later this week

— THE —
STRONACH
GROUP



Technology (MRI)

- Standing MRI
- Excellent for soft tissue injuries, bone bruising
- Should be in place in January 2020



Technology (CT Scan)

- Computed Tomography
- Excellent for screening – with some technologies we can scan 8+ horses per hour front and back limbs
- Greater detail than radiographs (~3,000) images for each set of limbs
- Looking into purchasing one in each region TSG operates – also working with other jurisdictions to ensure consistency of use

— THE —
STRONACH
GROUP



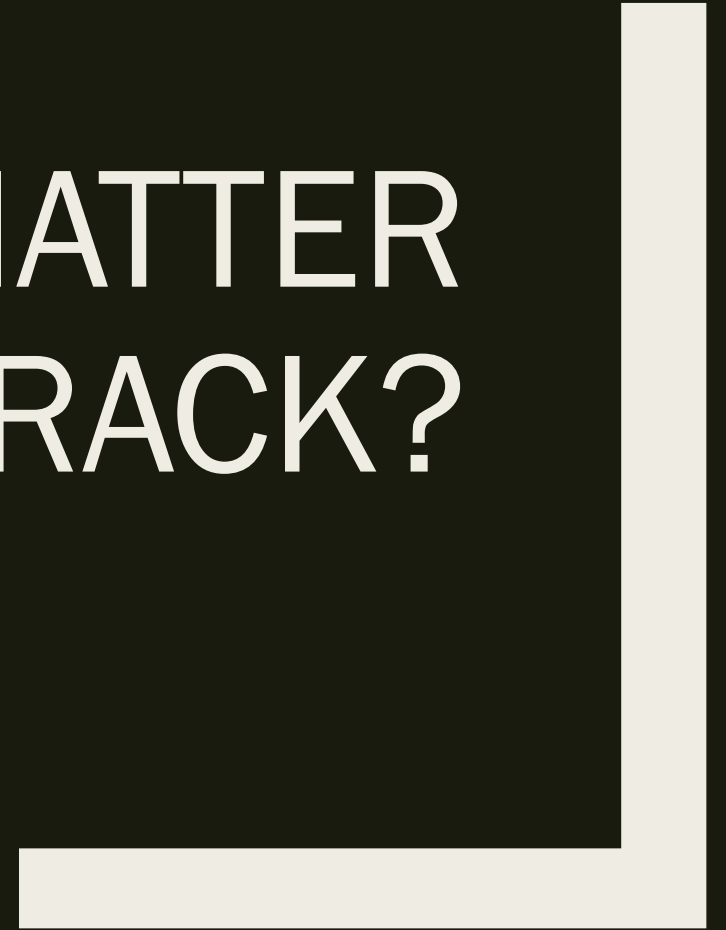
Other ideas

- We will continue to look for new ways to improve horse health and safety
 - *Data*
 - Regulation
 - Innovation
 - *Education*

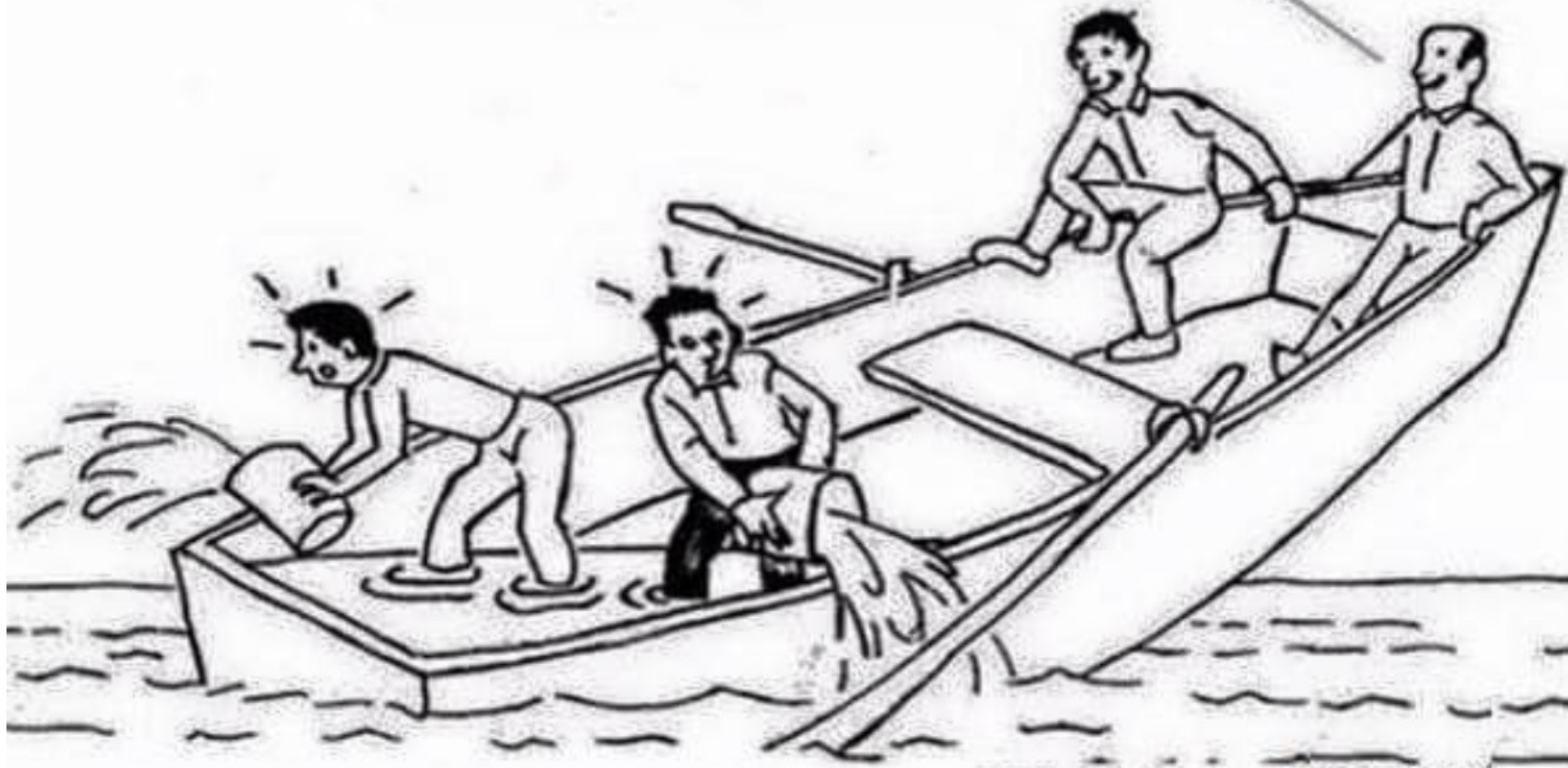


— THE —
STRONACH
GROUP

WHY DOES THIS MATTER
AT YOUR TRACK?



Sure glad the hole isn't at our end.



fb/TheUnknownButNotHidden

Are race horses being put in danger?

By **Katie Lamb** Opinion
Larry Bramlage Opinion
Wed., May 22, 2019 | 7 min. read

Hong Kong horse racing death sparks call for investigation after horse shatters its leg during Happy Valley race

KEENELAND

Fourth horse fatality of Keeneland Fall Meet adds to this year's unusually high total.

HORSE RACING



Churchill Downs is one of the deadliest racetracks in America

10 horses have died in 9 days at New York racetracks

[Chad Arnold](#), Albany Bureau | Published 11:47 a.m. ET July 22, 2019 | Updated 2:56 p.m. ET July 23, 2019

Arizona racehorses are dying at a record rate. The question is: why?

[Dennis Wagner](#), Arizona Republic | Published 6:00 a.m. MT Feb. 4, 2019 | Updated 12:46 p.m. MT Feb. 4, 2019

Opinions

The time for horse racing has passed. It's time to outlaw it.

The Washington Post
Democracy Dies in Darkness

The time to act is now

- We no longer have the luxury of time.
- The events that happened in California could easily happen anywhere.
- What can be done?

— THE —
STRONACH
GROUP

Engagement

- Join the Thoroughbred Safety Coalition (NYRA, CDI, TSG, and others) and push for reform.
- ADOPT training model from Santa Anita

Support

- Support for groups focused on reform (RMTC, NTRA, etc.)

Commitment

- Commitment to horse aftercare as an industry.

- Prepare to make a substantial investment in horse welfare and safety.
 - *Veterinary and support staff costs ~\$1M new costs per region for TSG*
 - *Equipment costs*
 - *Short term decrease in field size*

**IF WE DO NOT MAKE THESE INVESTMENTS,
HORSE RACING WILL NOT SURVIVE**



THANK YOU